

## PP03: NON-SURGICAL CORRECTION OF A CLASS III MALOCCLUSION IN AN ADOLESCENT BY MINISCREW - ASSISTED DENTITION DISTALIZATION: A 1-YEAR FOLLOW-UP

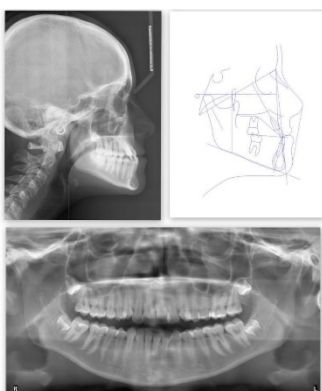
Karpitsaris N <sup>1</sup>, Papaefthymiou P <sup>2</sup>, Acar A

<sup>1</sup> Private practice, Amsterdam, Netherlands

<sup>2</sup> Marmara University, School of Dentistry, Department of Orthodontics, Istanbul, Turkey

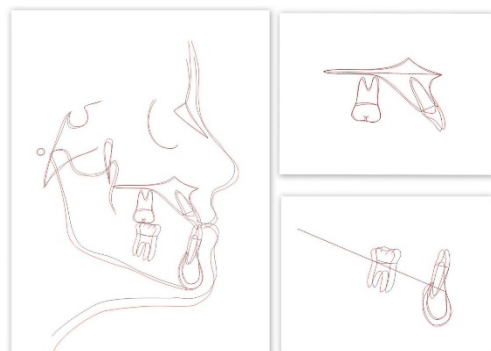
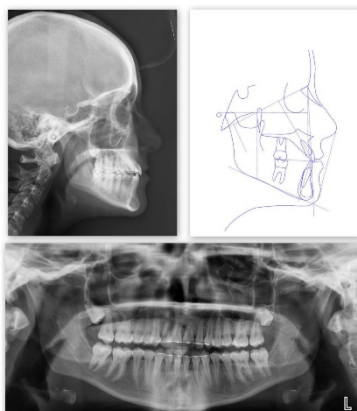
**Aim:** This case report aims to describe a treatment method for a 16-year-old female patient with a Class III malocclusion using mandibular skeletal anchorage, with a 1-year follow-up.

**Subjects and Methods:** A-16-year old female patient had a skeletal Class III malocclusion, protrusive mandible, anterior crossbite, and a deviated midline. The treatment included the use of fixed appliances and bilaterally inserted miniscrews in the mandibular buccal shelf region, which were incorporated for the en-masse distalization of the mandibular arch. Pre-treatment, during-treatment, post-treatment, and 1-year follow-up records are shown.



Measurement	Norm	Pre-treatment	Post-treatment
SNA angle (°)	82.0	83.0	83.0
SNB angle (°)	80.0	86.0	84.0
ANB angle (°)	2.0	-3.0	-1.0
Wits appraisal (mm)	0.0	-8.9	-4.1
SN-GoGn (°)	32.0	30.0	34.0
FMA (°)	25.0	22.0	27.0
N-Me (mm)	110.0	105.8	110.5
ANS-Me (mm)	66.0	58.0	61.5
LFH (%)	55.0	54.8	55.6
U1-SN (°)	103.0	111.0	113.0
IMPA (°)	95.0	83.0	79.0
Interincisal angle (°)	130.0	137.0	133.0
U1-NA (mm)	4.3	4.2	5.7
L1-NB (mm)	4.0	2.3	1.0
Nasolabial angle (°)	110.0	114.0	110.0
E-line-lower lip (mm)	-2.0	-1.1	-2.6

**Results:** The anterior negative overjet, the deviated midline, and the Class III molar and canine relationships were corrected. The ANB angle increased by 2 degrees, and the mandibular plane angle increased by 4 degrees. The patient's facial profile was improved, ideal occlusal relationships were achieved, and the treatment outcome was stable after 1 year of retention.



**Conclusions:** These results suggest that the application of miniscrews in the mandibular buccal shelf region combined with fixed appliances could provide an efficient approach for Class III camouflage treatment.